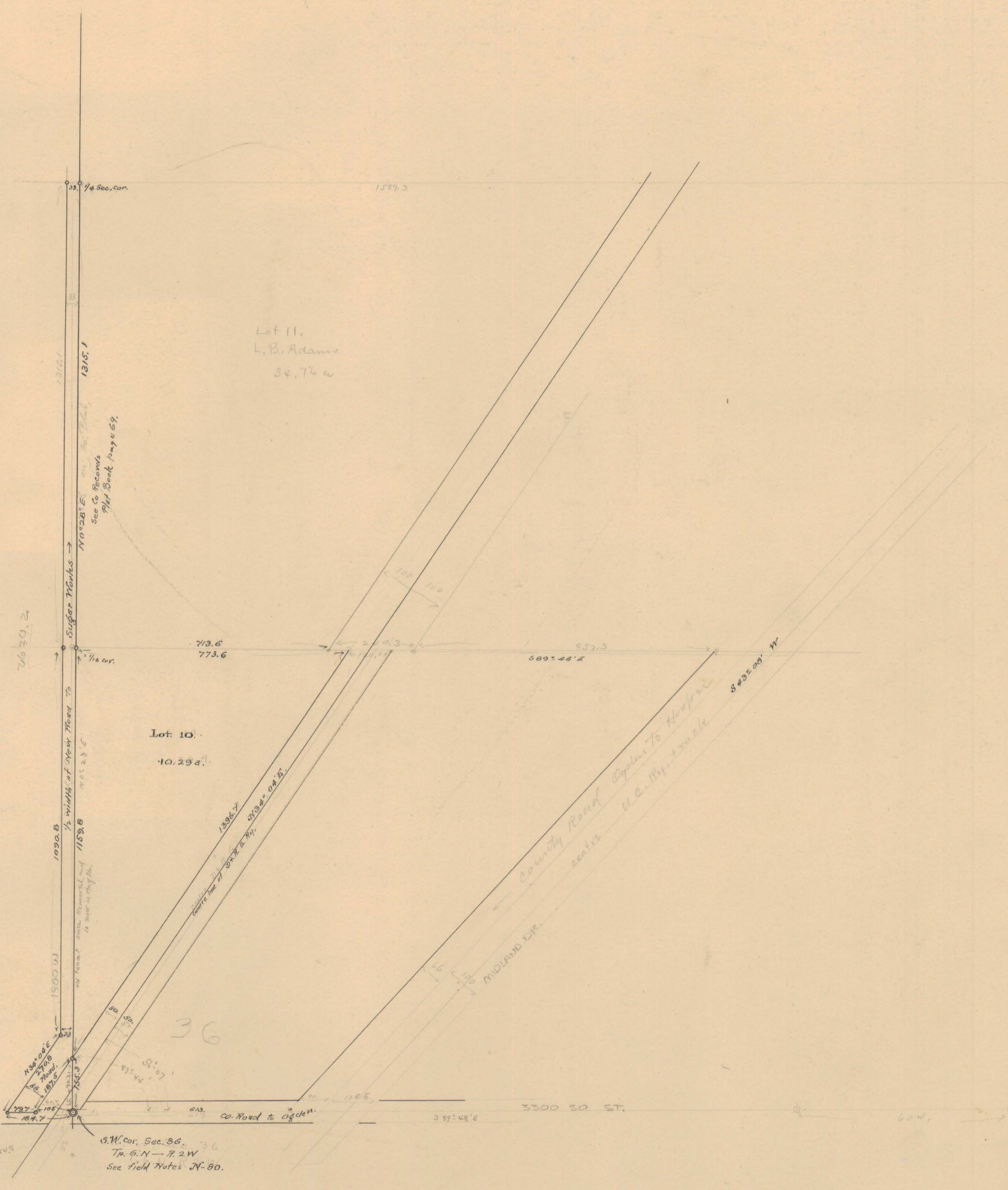


29A



1/4 Sec. cor.
 1577.5
 Lot 11.
 L.B. Adams
 34.76 a

1345.1
 N 10° 28' E
 See to Records
 1917 Book Page 459.

7630.2
 713.6
 773.6
 1/4 cor.

Lot 10.
 10.29 a

1090.8
 1/2 width of new road to
 N 10° 28' E
 1153.8

1886.7
 2132.0
 2132.0
 1153.8
 1/2 width of new road to

3500 SO ST.
 580.46
 S 89° 45' E
 604.1

Co. Road to Ogden

MIDLAND L.R.
 County Road Ogden to Hoop
 U.C. Ry. track
 8° 35' 00" W

U.S.M. cor. Sec. 36.
 T. 6. N. - R. 7. W.
 See field notes N-80.

5/4 of Sec. 36, T. 6. N. - R. 7. W.

200' = 1" scale

See page 128 of this book